

Keratin Pre-Bonded U-Tip Hair Extensions Insertion Instructions

These instructions are a guide only, as a recommended method for inserting u-tip pre-bonded hair extensions, and should be carried out by a qualified hairdresser, with no responsibility taken by Magdalena Hair Extensions for incorrect insertion or any issues form misuse of this product.

Please read through these instructions before attempting to insert any u-tip pre-bonded extensions

Magdalena Hair Extensions strongly recommends against any lightening or perming of the hair extensions.

Inserting U-Tip Pre-Bonded Hair Extensions

Tools required:

1. Pre-Bonded U-Tip Hair Extension Strands;
2. Tail/Needle Comb;
3. Sectioning Clips;
4. Sectioning Disk;
5. Bonding Tong.

Step 1: Wash hair with deep cleansing shampoo. Do not use conditioner or any other products. Dry hair completely.

Step 2:

Section hair. If inserting extensions for length or volume, start approximately 1.5cm from the nape. If inserting extensions as highlights section hair where required to create the desired aesthetically pleasing result.



Step 3:

Take a small circular section of hair from the centre of the section – about as much hair as what is being attached. This is the extension anchor. If too little hair is used to anchor the extension, the weight of the extension can be too great and the anchor hair can be pulled out from the scalp.



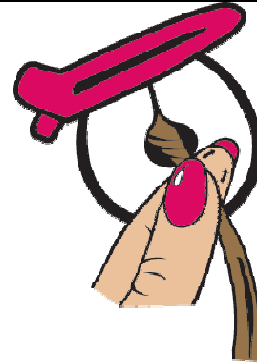
Step 4:

Insert sectioning disk around the anchor.



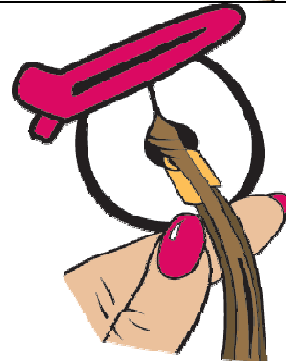
Step 5:

Lightly twist the anchor hair to help lock hairs together.



Step 6:

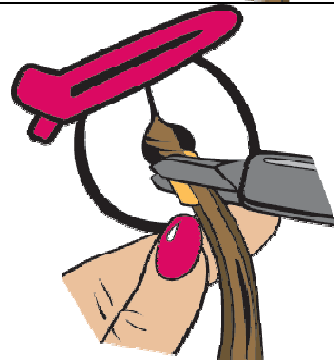
Place u-tip under anchor about 7mm from scalp.



Step 7:

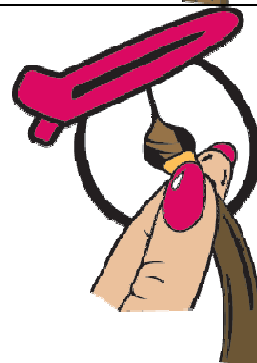
Apply bonding tongs to keratin glue and melt, until glue is soft and pliable.

NB: Over melting can cause glue evaporation, leaving not enough glue to hold a firm, long lasting bond.



Step 8:

Roll keratin glue between thumb and index finger until cool - this seals bond to the anchor. Glue can be remelted if required.

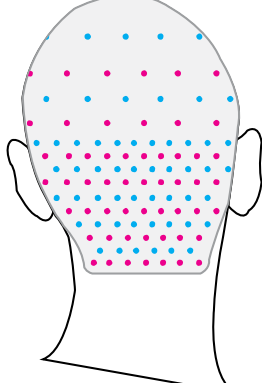
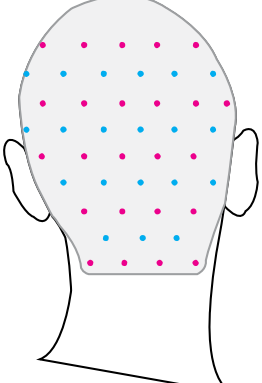


Step 9:

Remove sectioning disk. The u-tip pre-bonded extension is now firmly attached to the anchor.



Step 10: Insert the desired amount of extensions.

<p>Inserting extensions for length: Start from the nape, inserting in a brick pattern leaving a gap the same size as the anchor, between each anchor.</p>	<p>Inserting extensions for volume: Start from the nape, inserting in a brick pattern leaving a gap of about 2.5cm between each anchor..</p>
	

Step 10: Cut and style extensions as desired.

- NB:**
- * When cutting extensions, it is recommended that they be “slice” cut with either scissors or a razor, rather than “blunt” cut as this helps maintain a softer, more natural finish.
 - * Extensions can be coloured while in the head with a semi or demi permanent colour.
 - * Keep heated styling aids away from the keratin glue bonds.

Step 11: Do not wash or wet hair for 24 hours after insertion to ensure bonds seal tightly.

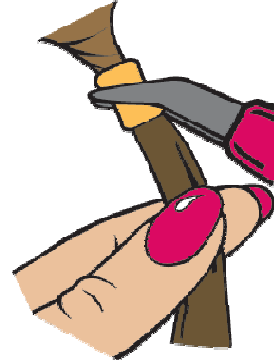
Removing U-Tip Pre-Bonded Hair Extensions

Tools required:

1. Pliers;
2. Cottonwool;
3. Acetone – Must be purchased locally (available at chemists) as it cannot be posted due to its highly flammable nature;

Step 1:

Use pliers to squash each keratin glue bond.



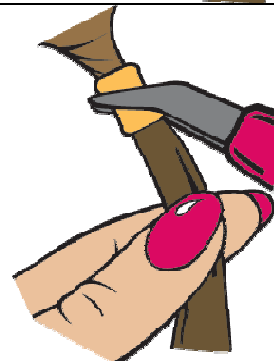
Step 2:

Apply acetone to cottonwool then squeeze acetone from cottonwool onto each keratin glue bond. Leave for 5 minutes.



Step 3:

Use pliers to squash each keratin glue bond again.



Step 4:

Lightly pull the extension out. If it does not slide out easily, repeat steps 3-4 again.



Step 5:

Comb out any keratin glue and wash the hair to remove any residual acetone.



Caring for U-Tip Pre-Bonded Extensions after insertion.

Washing:

Step 1: Using a moisturising shampoo, massage scalp only using fingertips. Drag lather to ends – do not agitate ends as this may cause tangling. Rinse thoroughly.

Step2: Apply generous amount of moisturising conditioner from roots through to ends. Rinse thoroughly.

Step 3: Towel dry hair and apply oil based moisturiser.

Step 4: Always avoid heating keratin glue bonds.

Drying straight:

1. Apply a straightening cream.
2. Blow dry hair as normal.
3. Alternately, hair can be dried naturally and then straightened with a straightener.
4. Preference is given to Ceramic/Ionic hairdryers, straighteners and brushes.

Drying Curly/Wavy:

1. Apply a frizz controlling cream.
2. Twist or scrunch hair as usual, using a diffuser.
3. Alternately, hair can be dried naturally and then curled with curling tongs.
4. Preference is given to Ceramic/Ionic hairdryers and curling tongs.