

Clip-In Hair Extension Insertion Instructions

Magdalena Hair Extensions strongly recommends against any lightening or perming of the hair extensions.

Inserting Clip-In Hair Extensions

Tools required:

1. Sectioning Clips;

Step 1: Wash & style hair as desired.

Step 2:

Section hair from temple to temple.



Step 3:

Open clips on extension, then clip the top clips into place along the section line, by snapping the clips closed. If required backcomb the roots slightly to give better anchorage.

NB: If the clip does not close, lessen the amount of hair in the clip.



Step 4:

Snap the bottom and side clips closed around the hair line.



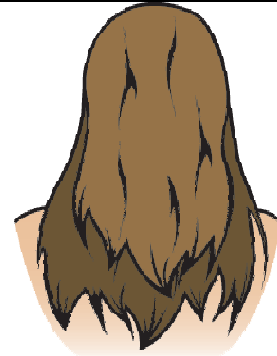
Step 5:

If required, readjust clip positioning on head.



Step6:

Release top hair and style into hairpiece.



Caring for Clip-In Extensions.

Washing

Tools required:

- 2L bucket/ice cream container;
- mannequin head;
- T-pins;
- Moisturising shampoo;
- Moisturising conditioner;
- Styling Products
- Hand Hair Dryer, Over Head Hair Dryer or any other heated styling implement, with preference is given to Ceramic/Ionic

Step 1: Brush out any tangles in the Clip-In Extension.

Step 2: Fill bucket with lukewarm water and 1 tablespoon (2 if very dirty)shampoo. Agitate the water to mix in the shampoo.

Step 3: Immerse the Clip-In Extension in the water and allow to soak for 3 minutes. Do not agitate the piece in the water as this may cause tangling.

Step 4: Remove the Clip-In Extension and rinse under running water until all bubbles are removed (if shampoo is not completely removed, tangling may occur when conditioner is added).

Step 5: Empty the bucket and refill with clean lukewarm water and 1 tablespoon (2 if old/dry)conditioner. Agitate the water to mix in the conditioner.

Step 6: Immerse the Clip-In Extension in the water and allow to soak for 5 minutes. Do not agitate the piece in the water as this may cause tangling.

Step 7: Remove the Clip-In Extension and rinse under running water until all conditioner is removed.

Step 8: Squeeze out excess water and blot dry in a towel. DO NOT WRING Clip-In Extension.

Step 9: Pin Clip-In Extension to the mannequin head and apply oil based moisturiser and any straightening/frizz controlling cream.

Drying straight:

1. Apply a straightening cream.
2. Blow dry hair as normal.
3. Alternately, hair can be dried naturally and then straightened with a straightener.
4. Preference is given to Ceramic/Ionic hairdryers, straighteners and brushes.

Drying Curly/Wavy:

1. Apply a frizz controlling cream.
2. Twist or scrunch hair as usual, using a diffuser.
3. Alternately, hair can be dried naturally and then curled with curling tongs.
4. Preference is given to Ceramic/Ionic hairdryers and curling tongs.